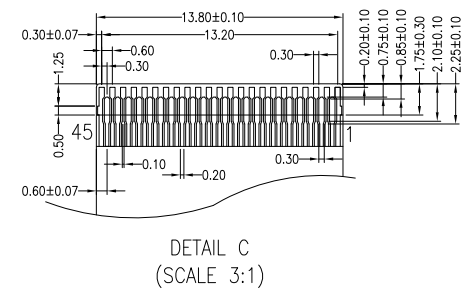
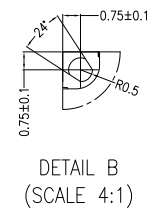
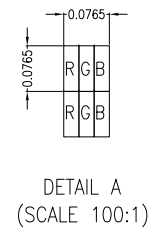
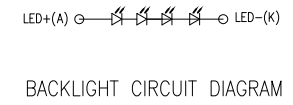


PIN ASSIGNMENT FOR LCM			
PIN	SYMBOL	PIN	SYMBOL
1	GND	24	NC
2	IOVCC	25	NC
3	GND	26	TE
4	MIPL_D1P	27	ID
5	MIPL_D1N	28	NC
6	GND	29	NC
7	MIPL_CLKP	30	RESET
8	MIPL_CLKN	31	GND
9	GND	32	VCI
10	MIPL_D0P	33	GND
11	MIPL_D0N	34	GND
12	GND	35	GND
13	NC	36	LED+
14	NC	37	LED-
15	NC	38	GND
16	NC	39	GND
17	NC	40	GND
18	NC	41	GND
19	NC	42	NC
20	NC	43	NC
21	NC	44	NC
22	NC	45	NC
23	NC		



- NOTES:
1. DISPLAY TYPE: TFT, TRANSMISSIVE, NORMALLY BLACK
 2. OPERATING VOLTAGE: VCI=2.8V (TYP.), IOVCC=1.8V (TYP.)
 3. VIEWING DIRECTION: FULL VIEWING ANGLE
 4. DRIVER IC: ST7701
 5. OPERATING TEMP.: -30°C ~ 80°C
 6. STORAGE TEMP.: -30°C ~ 80°C
 7. LED BACKLIGHT: WHITE LED, If=20mA, Vf=11.2V~13.6V
 8. SURFACE LUMINANCE: 500CD/M² (TYP.)
 9. TOP POLARIZER SURFACE TREATMENT: ANTI-GLARE
 10. RECOMMEND MATCHING CONNECTOR: FH35C-45S-0.3SH OR EQUIVALENT
 11. ONLY THE SINGLE LAYER AREA ON FPC IS BENDABLE AND THE MINIMUM BEND RADIUS IS 1.5MM
 12. GENERAL TOLERANCE: ±0.2MM
 13. ROHS COMPLIANT



MIT MULTI-INNO TECHNOLOGY CO., LTD.

DRAWN BY:	RITA	2023.10.11		MODULE P/N:
CHECKED BY:			SCALE : 1/1	MIQ240ALT-1
APPROVED BY:			UNIT: mm	DESCRIPTION:
VERSION NO:	01		SHEET NO.: 1/1	TFT MODULE

01	FIRST ISSUE	RITA	2023.10.11
VER.	REVISED DESCRIPTION	REVISER	DATE